



Robert Stempel College
of Public Health
& Social Work

Stempel College New Student Orientation

Fall 2021

Agenda

- Welcome
- Office of Student and Alumni Affairs Overview
- Library Services
- Student Organizations Introduction
- COVID-19 Vaccine Q&A
- Program Breakout Sessions

Link to Orientation page:

<https://go.fiu.edu/stempelnewstudentorientation>



Robert Stempel College
of Public Health
& Social Work

Academic Programs at Stempel College

Department of Dietetics and Nutrition:

Bachelor's
Master's
Ph.D.

Public Health Programs (MPH and PhD):

- Biostatistics
- Epidemiology
- Infectious Disease
- Environmental Health Sciences
- Environmental Toxicology
- Health Promotion & Disease Prevention
- Maternal & Child Health
- Health Disparities

School of Social Work:

Bachelor's
Master's
Ph.D.

Academy for International Disaster Preparedness:

Bachelor's
Master's



Robert Stempel College
of Public Health
& Social Work



Office of Student & Alumni Affairs

Meet the OSAA Team

Irene Abad – Manager, Academic & Student Success

Sandhya Appunni- Data Analyst

Zoraya Arguello – Sr. Coordinator of Public Health Programs

Jose Candelaria – Admissions Operations Manager

Lauren Cavicchi – Assistant Director, Career Development

Magnolia Hernández, Ph.D. – Assistant Dean

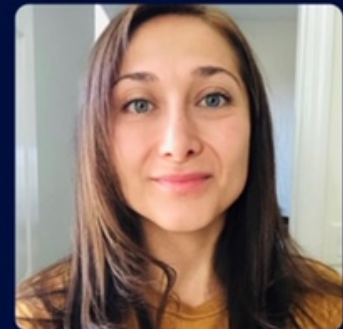
Juliet Mora – Student Assistant

Fiorella Suyon – Public Health Admissions Coordinator

Student Success



Robert Stempel College
of Public Health
& Social Work



Office of Student & Alumni Affairs Overview

Located in AHC5 Room 145 | 305-348-7783

- Important Dates
- University Resources and Activities
- College Resources and Activities



Student Success

- Professional Development
- Funding and Access to On-campus Resources
- Student Engagement
- Outreach and Staying Connected

FIU

Robert Stempel College
of Public Health
& Social Work

IMPORTANT DATES:



Robert Stempel College
of Public Health
& Social Work

New Graduate Student Orientation University Graduate School

Part 1: General Information Session (Virtual)

Thursday, August 19, 2021 | 1:00pm to 3:00pm
Via Zoom Webinar

Part 2: Graduate Student Life and Resources Panel (In Person)

Friday, September 3, 2021 | 12:00pm to 2:00pm
Earlene and Albert Dotson Pavilion, MARC Building, MMC

Part 3: Research Integrity and Dissertation/Thesis Milestones

(For Doctoral and Thesis-bound Masters students ONLY)

Friday, October 8, 2021 | 12:00pm to 1:30pm
In Person. Location: TBD

International Student and Scholars Services Welcome International Student Session

Friday, August 20, 2021

9:00-11:30 a.m. via Zoom Webinar

Panthers Protecting Panthers



FIU

Robert Stempel College
of Public Health
& Social Work

Our No. 1 priority is the continued wellbeing of our faculty, staff and students. To that end, and in consultation with our medical experts, we have instituted the following protocol:

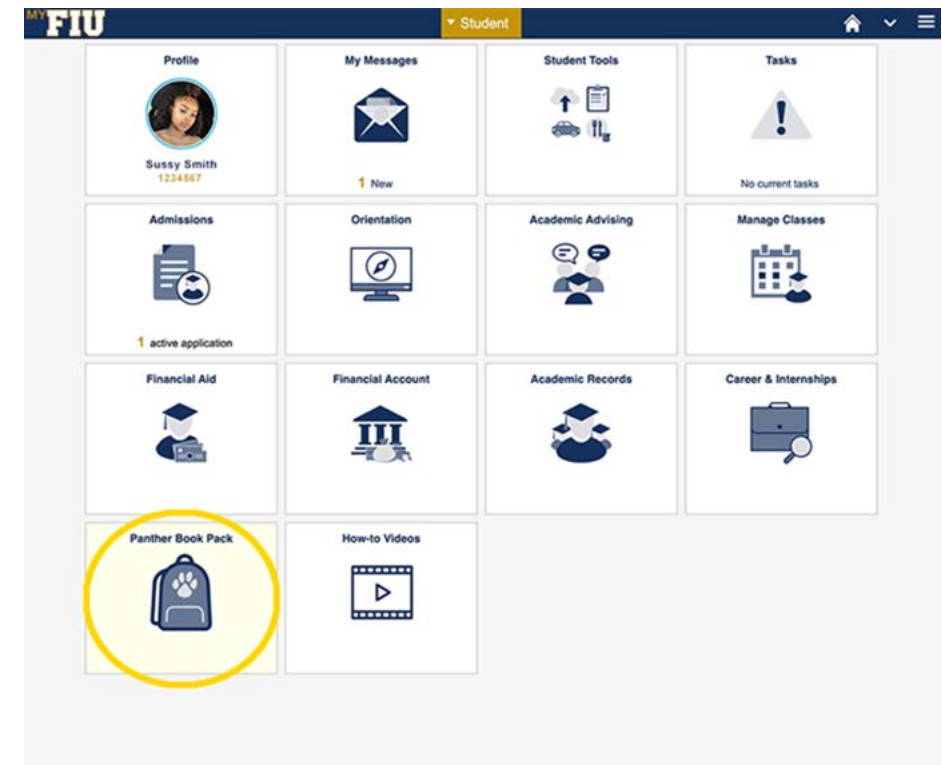
- All faculty, staff and students must fill out the P3 app prior to coming to campus
- We **strongly** recommend that facial coverings continue to be worn indoors
- Frequent washing of the hands, preferably with soap and water, must occur

repopulation.fiu.edu



Starting Fall 2021, the Panther Book Pack is an affordable course materials rental program providing all **undergraduate** students with their required course materials by the first day of class at a fixed rate of \$20 per credit hour. Students are estimated to save as much as \$375 on course materials per semester with the Panther Book Pack program.

Log in to MyFIU using your FIU credentials and locate the Panther Book Pack tile toward the bottom of the page.



Robert Stempel College
of Public Health
& Social Work



Robert Stempel College
of Public Health
& Social Work

OneStop

Phone/Chat Hours

Monday – Thursday: 9am – 8pm

Friday: 9am – 6pm

Last day to enroll without incurring a late enrollment fee: August 22nd

Last day to Add/Drop: August 30th

Enrollment cancellation for non-payment: September 3rd

First day of class? Monday, August 23rd



University Resources & Activities



Professional Development

- Career & Talent Development: <https://career.fiu.edu>
- Center for Leadership and Service: <https://studentaffairs.fiu.edu/get-involved/leadership-and-service/>
- Workshops for Graduate Students:
<http://gradschool.fiu.edu/events/category/workshop/>

Other Resources

- Student Government Association
- Graduate & Professional Student Committee (GPSC)

University Resources

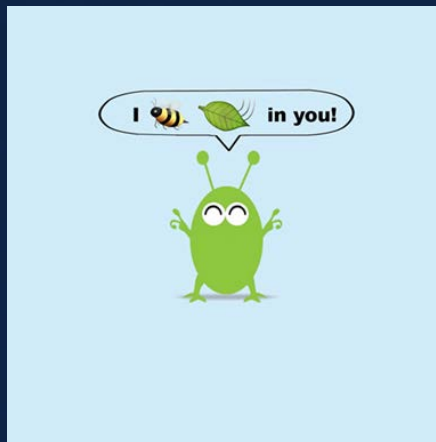
- Counseling & Psychological Services
 - Individual, group, online, and couples counseling
- Student Health Services- Healthy Living Program
 - Chair Massages
 - Aromatherapy oils
 - Dietitian Consultation
- Wellness & Recreation Center (AKA: Gym)
 - FREE classes and Fitness Assessment
- FIU Food Pantry
 - 10 pounds of food per week- currently located in GC 1210
 - <https://studentaffairs.fiu.edu/get-support/student-food-pantry/index.php>
- Tutoring Services



Robert Stempel College
of Public Health
& Social Work

FIU CAPS: Counseling and Psychological Services

Offers many services for students including online self-help, counseling, workshops, resources, anxiety/depression help, and a variety of other services! We are here to help you succeed!



Contact

To make an appointment with us, please call:

305-348-2277 (CAPS)

Note: We continue to offer initial appointments through telehealth.

Emergency/Crisis/After-Hours

If you are in need of immediate services outside of our normal operating hours, please call our 24-Hour hotline (305-348-2277 and follow prompts) to speak with a licensed clinician.

MMC

SHC 270

305-348-2277

Telehealth Hours of Operation

Monday - Friday: 8 AM - 5 PM

Face-to-face Hours of Operation

By appointment



Robert Stempel College
of Public Health
& Social Work

FIU Student Health Center

- Affordable and accessible student-focused medical care
- Pharmacy
- Healthy Living Program
- Stress Management
- Massage therapy/acupuncture
- Free aroma therapy oils
- And MORE!!!

In order to protect the well-being of students and staff, do not walk in to the clinic. Please call 305-348-8385 to schedule an appointment.

Location: Student Health Center (SHC)

Phone: 305-348-2401

Website: studenthealth.fiu.edu





Robert Stempel College
of Public Health
& Social Work

FIU Food Pantry

The pantry is available to all currently enrolled students. No proof of need is required, and students can access the pantry once a week taking up to 10 pounds of food each visit. All you need is your One card!



Contact

Contact

Modesto Maidique Campus Pantry

Location: GC 319

Monday 1:00-5:00pm

Tuesday 1:00-5:30pm

Wednesday 1:00-5:30pm

Thursday 1:00-5:00pm

Friday 11:00-2:00pm

Biscayne Bay Campus Pantry

Location: WUC 256

Monday 12:30-5:30pm

Tuesday 12:30-5:00pm

Wednesday 12:30-5:00pm

Thursday 12:30pm - 5:30pm

Friday 11:00-3:00pm



Robert Stempel College
of Public Health
& Social Work

FIU Center for Excellence in Writing

Assist students in all stages of the writing process through face-to-face and online tutoring, workshops and community engagement. Whether you are brainstorming, drafting, revising or polishing, their writing consultants can assist you with projects such as papers, reports and projects for any course in any department.



Modesto A. Maidique Campus

Green Library Room 125

Monday - Thursday 9 a.m. - 8 p.m.

Friday 9 a.m. - 5 p.m.

Phone: 305-348-6634

Make an appointment at:
writingcenter.fiu.edu/

Where's Tutoring?



FIU

Robert Stempel College
of Public Health
& Social Work

- **FREE!!!!**
- Center for Academic Success- Online via Zoom: <https://cfas.fiu.edu/>
- Assistance for Academic Achievement (AAA) Tutoring- Fully Online via Zoom
Email: aaatutoring@fiu.edu
- On-campus Housing Residents-- Academic Resource Center (ARC)- University Towers 121
- FREE Chemistry Tutoring for all Dietetics undergraduates!

Stempel College Student Success Resources



FIU

Robert Stempel College
of Public Health
& Social Work



Stempel College Fall 2021 Events

Stempel College Welcome Event

Date: Thursday, August 26, 2021

Time: 1:30- 4:30 pm

Location: AHC5 Courtyard

Social Work Meet & Greet

Date: Wednesday, September 8, 2021

Time: 3:00- 5:00 pm

Location: AHC5 Courtyard

Re-set to De-stress

Date: Tuesday, September 7, 2021

Time: 12PM-1:00 PM

Room: AHC5-300

Dietetics & Nutrition Meet & Greet

Date: Wednesday, September 15, 2021

Time: 2:00-3:00 pm

Location: TBD

PhD Peer Power: Thriving Together

Tentative date: Wednesday, September 8, 2021

Time: 6:00-7:30 pm

Location: TBD



Robert Stempel College
of Public Health
& Social Work

Diversity and Inclusion at FIU



UNITED FOR CHANGE

Friday, August 27, 2021

9:30 AM – 5:00 PM

Wolfe University Center at the Biscayne Bay Campus or virtually

Open to all FIU students, faculty, and staff.

Learn more and register: go.fiu.edu/sjs2021



Robert Stempel College of Public Health & Social Work Diversity & Inclusion Committee

Mission

The Stempel College Diversity & Inclusion Committee operates to advise the Dean of the Robert Stempel College of Public Health & Social Work on issues surrounding diversity and inclusion at the college and to provide recommendations for fostering this institutional core value.

<https://stempel.fiu.edu/diversity-inclusion-at-stempel-college/>

Career Events

Tuesday, September 21st – AHC5-300

Resume Writing: 3-4pm

CV Writing: 4-5pm

Wednesday, October 20th – AHC5-300

Job Search Strategies and Networking Skills
4-5pm

Tuesday, November 16th – AHC5-300

Interviewing Skills and Professionalism in the
Workplace

5-6 pm

FIU

Robert Stempel College
of Public Health
& Social Work



Stempel College Career Development Overview

- One on one Career Coaching
- Career Exploration/Assessments (MBTI & Strong)
- Employment/Internship Opportunities
- Networking/Career Events
- Professional Development Workshops
- Handshake





Robert Stempel College
of Public Health
& Social Work

**IT STARTS WITH
A HANDSHAKE.**



handshake

FIU

Career and Talent
Development

Career Development Resources

**HANDSHAKE IS FIU'S NEW DATABASE FOR
CAREER OPPORTUNITIES AND EVENTS.**

Use Handshake to:

- ✓ apply to internships, full-time and part-time jobs
- ✓ make an appointment to meet with a career coach
- ✓ see upcoming workshops, career fairs and events
- ✓ find employers for on campus interviews

FIU.JOINHANDSHAKE.COM

Career Prep Starts Today!

Communicating with Your Professors

- Use and check your FIU email
 - Do not use your 2cute4u@something.com or McLovin@something.com
- Informative subject line
- Begin with a formal greeting
 - ie: Good Afternoon, Dear, Hello, or Greetings Professor _____
(NOT: hey, what's up)
- No text-emailing (slang, emoticons, abbreviations)
 - ie: How r u?, Thx 4 ur help, idk what 2 rite
- Ask clear questions or provide clear statements
 - Be concise and professional
- Check your grammar (punctuation, spelling)
- Close email properly and include your name and panther ID
 - Sincerely, Best Regards, Thank you



Career Development Contact Information

Ms. Lauren Cavicchi, Assistant Director

Career Development

lcavicch@fiu.edu

(305) 348-2264

Stempel College Office of Student & Alumni Affairs

AHC5-142

Professional Development Workshop Calendar:

<https://career.fiu.edu/professional-development/workshops/index.html>



Robert Stempel College
of Public Health
& Social Work

Financial Wellness



FIU

Robert Stempel College
of Public Health
& Social Work

Topics to be covered:

- Budgeting and managing your funds
- Searching and applying for scholarships
- *Funding Your Graduate Education*
- Planning ahead with financial aid
- Addressing Emergencies (Emergency Aid Fund)
- Figuring out your tuition and account balance
- Accessing your financial aid funds
- Fellowships

FIU's Financial Wellness Program



Scholarships

- Stempel College
 - <https://stempel.fiu.edu/student-life/funding-your-education/>
- FIU Scholarships and Academic Works
 - <https://fiu.academicworks.com/>
- Office of Scholarships
 - <https://scholarships.fiu.edu>
- Honors College
 - <https://honors.fiu.edu/current-students/scholarships/>
- OneStop
 - <https://onestop.fiu.edu/scholarship/index.html>
 - <https://onestop.fiu.edu/financial-aid/index.html>
- University Graduate School
 - <http://gradschool.fiu.edu/students/funding/>
- International Student & Scholar Services
 - <https://globalaffairs.fiu.edu/iss/financial-resources/>



Perks

- FIU Panther TECH
 - FREE downloads of Microsoft Office and McAfee LiveSafe Antivirus
- FIU Library- Tech Hub
 - Borrow a laptop (4 hours or up to 3 days)
 - Borrow other devices (tablets, accessories, Kindle, calculators, GPS, DVD player, etc.)
 - <https://library.fiu.edu/using-the-library/device-checkout>
- Parking & Transportation
 - FreeBee- Free on-demand door to door transportation services for our FIU community, simply download the app
 - Panther Mover- MMC shuttle between PC loading dock and Panther Garage
 - Panther Express- from BBC to MMC
 - CATS Shuttle- from MMC to EC
 - <https://parking.fiu.edu/>
- FIU One-Card Rewards
 - Earn points and get prizes
 - <https://shop.fiu.edu/onecard/>



Robert Stempel College
of Public Health
& Social Work



Student Discounts

- FIU Panther TECH
 - Greatly discounted software including major specific (ie: SPSS)
 - Computers, tablets, phones, repairs, etc.
- FIU Retail & Services
 - Retail- From FIU apparel to course materials, printing & shipping, optical care, and more
 - Services- From health & beauty, to automotive care, and banking
 - <https://shop.fiu.edu/>
- Children's Creative Learning Center
 - Must be full time student (9 cr. for undergrad and 6 cr. for grad)
 - Ages 2-5 years old
 - <https://studentaffairs.fiu.edu/campus-services/childrens-creative-learning-center/admission-information/index.php>
- FIU Bike Shop
 - Discount on repairs, etc.



Robert Stempel College
of Public Health
& Social Work



Student Discounts

- Tickets At Work
 - Company Code: FIUPANTHERS
 - <https://ticketsatwork.com/tickets/account.php?sub=enroll>
- FIU Human Resources Perks
 - <https://hr.fiu.edu/employees-affiliates/benefits/perks-services/>
- Amazon Prime Student
 - To Sign Up, all you need is your FIU email!
- Adrienne Arsht Center- Utix
- Online stores via UniDays
 - <https://www.myunidays.com/US/en-US/content/about>
- Phone Service Provider (AT&T, Sprint, T-Mobil, Verizon)
- Car Insurance (Geico)



Robert Stempel College
of Public Health
& Social Work



Stay Connected!

Stempel College Office of Student & Alumni Affairs

AHC5-145

Monday thru Friday 8:30 am-5:00 pm

Phone: 305-348-7783

- Events, Funding, and Career Opportunities—Weekly Newsletter
- Student Organizations & Collaboration with OSAA
- Student Resources <https://stempel.fiu.edu/students/>

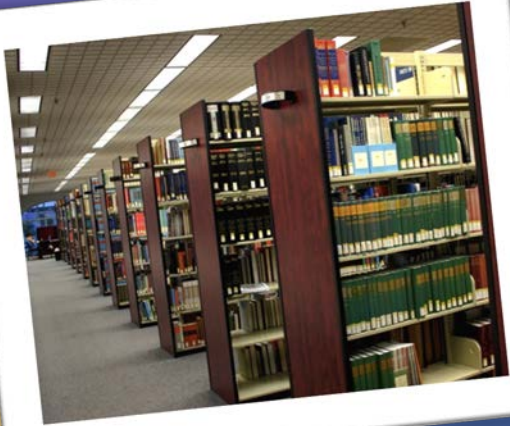
Follow Us!



FIU Libraries: Resources & Services

FIU

**Robert Stempel College
of Public Health
& Social Work**



Ramces Marsilli, MLIS
Health Sciences Librarian

What You Need to Know

- Find Us: Onsite and Online
- Sign In to Library Website
- Find Books and Other Materials
- Use Research Guides
- Get Help



Onsite: Green and Hubert Libraries

MMC: Green Library

BBC: Hubert Library



Bring your FIU One Card!



Access to the Library

- Your FIU One card also doubles as your library card.
- You will be able to:
 - Access the Green Library
 - Reserve Study Rooms
- You will be able to check out:
 - Books
 - Calculators
 - Laptops
 - Chargers

And More!

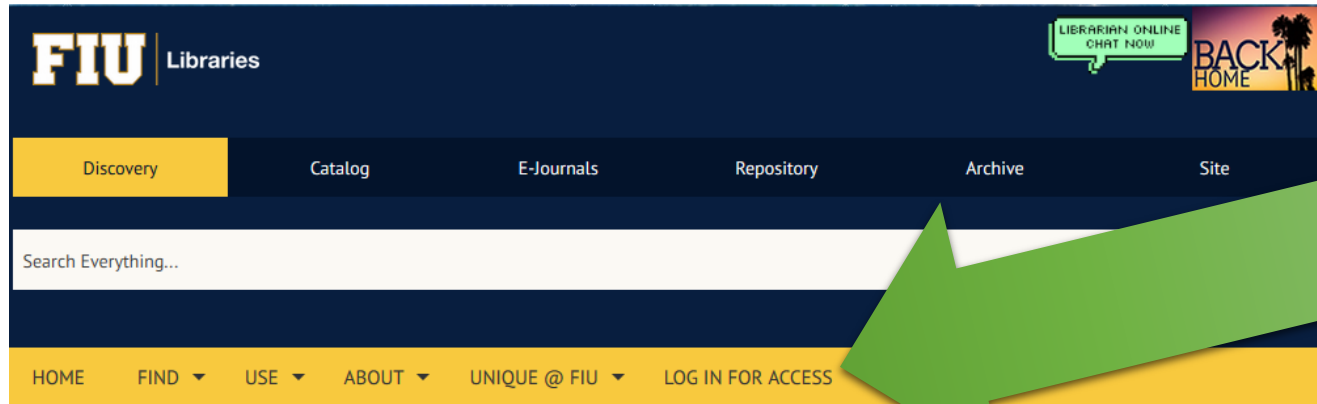
FIU *one* **card**
The *Only* Card
You Need!



FIU
Libraries

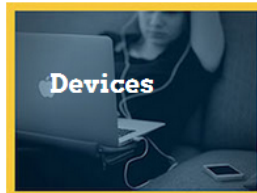
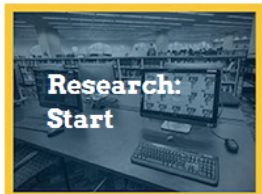
Online

library.fiu.edu



Use your
Canvas (email)
or library
account
information to
log in.

Popular Services



Time & Space

Green Library	8am – 8pm
Hubert Library	8am – 8pm
Engineering Library Services	8:30am – 5pm

🕒 Hours

🔍 Study Rooms

📅 Calendars

🔄 Renewals



Research Guides

- Research and database help guides created by librarians to make your life easier.
- Find your subject to begin.
 - Public Health
 - Dietetics & Nutrition
 - Social Work

The screenshot displays the Research Guides website. At the top, there are navigation tabs: 'ALL GUIDES', 'BY SUBJECT' (which is highlighted), 'BY TYPE', and 'BY OWNER'. Below these tabs is a search bar with the placeholder text 'Enter Search Words' and a 'Search' button. To the right of the search bar is a section titled 'A-Z Database List' with a description: 'Full list of Databases the library subscribes to, including trial access.' and a 'Go to A-Z List' button. Below the search bar, it says 'Showing 63 Subjects'. A list of subjects is displayed, each with a right-pointing arrow and a number in a circle indicating the number of guides available. The subjects listed are: Research Tips + Tools (2), Services & Collections (1), Accounting (2), African & African Diaspora Studies (2), Anthropology (4), Architecture (9), Art & Art History (15), Asian Studies (2), Athletic Training (1), and Business (14). To the right of the subject list is a section titled 'Your Friendly Librarians' featuring two portraits of librarians: Gayle Williams and Kelley Rowan.

ALL GUIDES BY SUBJECT BY TYPE BY OWNER

Search: Enter Search Words Search

A-Z Database List

Full list of Databases the library subscribes to, including trial access.

Go to A-Z List

Showing 63 Subjects

> Research Tips + Tools	2
> Services & Collections	1
Accounting	2
African & African Diaspora Studies	2
Anthropology	4
Architecture	9
Art & Art History	15
Asian Studies	2
Athletic Training	1
Business	14

Your Friendly Librarians

Gayle Williams

Kelley Rowan



Public Health Guide

Guide and help center for students and researchers in public health at FIU.


welcome

find background info.

find articles

about scholarly sources
& peer review

find books, media, & more

find data & statistics 

specialized public health
resources

cite right

feedback & get help

**contact
information**

welcome to the public health guide



This LibGuide is designed to be a help center for FIU public health students and researchers. Explore the tabs above to learn how to access materials through the FIU libraries, use research databases, cite sources, and much more.

Dietetics and Nutrition Guide

Guide and help center for students and researchers in dietetics and nutrition at FIU.

welcome

welcome to the
dietetics & nutrition
guide

related libguides

fiu libraries
information

find background info.

find articles

about scholarly sources
& peer review

find books, media, & more

find data & statistics ☐

specialized dietetics &
nutrition resources

cite right

feedback & get help

welcome to the dietetics & nutrition guide



This LibGuide is designed to be a help center for FIU dietetics and nutrition students and researchers. Explore this guide to learn how to access materials through the FIU libraries, use research databases, cite sources, and much more.

Social Work Guide

Guide and help center for students and researchers in social work at FIU.

welcome

welcome to the social
work guide

related guides

fiu libraries
information

find background info.

find articles

about scholarly sources
& peer review

find books, media, & more

find tests & measures

find data & statistics ☐

find websites

specialized social work
resources

cite right

feedback & get help

welcome to the social work guide



This LibGuide is designed to be a help center for FIU social work students and researchers. Explore the tabs above to learn how to access materials through the FIU libraries, use research databases, view counseling therapy videos online, cite sources, and much more.

related guides

Your Librarian:

Ramces Marsilli MLIS, MM
Health Sciences Librarian

Email: rmarsill@fiu.edu

Phone: (305) 348-4851

Office: GL 233B (MMC)



At the Libraries:

Visit the 2nd Floor Information & Research
Services/ASK Desk

Thank You
Questions?





Robert Stempel College
of Public Health
& Social Work

Student Life at Stempel College

Student Organizations

Student Dietetics Association (SDA)

Andrea Colon , Public Relations Chair

president.sda@gmail.com

Association of Graduate Students in Dietetics & Nutrition (AGSDN)

Cathalina Rubila, President

crubi041@fiu.edu



Robert Stempel College
of Public Health
& Social Work

Student Life at Stempel College

Student Organizations

Student Social Work Association (SSWA)

Maiah Duckstein, President

mduck001@fiu.edu



Robert Stempel College
of Public Health
& Social Work

Student Life at Stempel College

Student Organizations

Environmental Health Student Association

Juan Morales, President

jumorale@fiu.edu

Ferass Sammoura, Vice President

Leaders in Maternal and Child Health (LMCH)

Osmari Novoa, Member

onovoa@fiu.edu



MOVE BEYOND COVID-19

DISCUSSING VACCINES AND WHAT YOU CAN DO

HOSTED BY:

FIU

Research Center in
Minority Institutions

The COVID-19 Pandemic is NOT Over



Variants are increasing transmission.
Hospitalizations and deaths continue.

COVID-19 May Cause Long-Term Damage



Heart
Damage



Neurological
Issues



Fatigue &
Arthritic
Pain



Lung
Damage



Mental Health
Problems

COVID-19 May Cause Long-Term Disease



1 in 3 have "Long COVID"



Even young people & people
with no initial symptoms



Fatigue



Coughing



Stomach
Pain



Dizziness

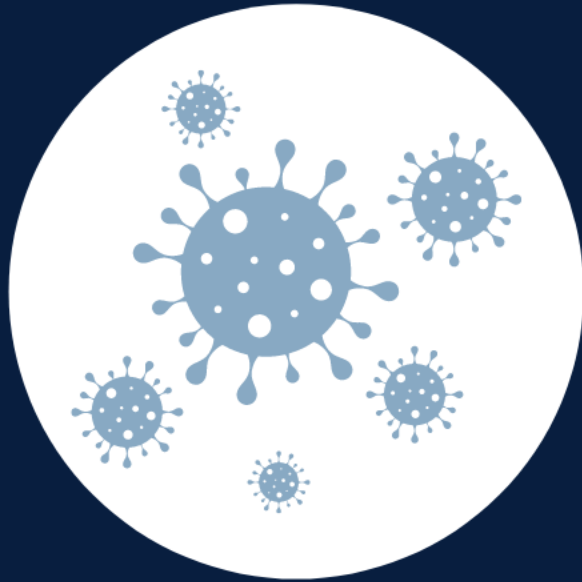
...and many other symptoms

Vaccine: Type of medicine that causes your immune system to **develop immunity** against a specific disease.

The Basics

Immunity: Condition that allows you to be exposed to viruses or bacteria without becoming infectious or sick.

How Do COVID-19 Vaccines Work?



Expose body to part
of coronavirus
protein.



Stimulates immune
system to create
antibodies and
memory cells.



Memory cells are
ready in case body
is exposed to
coronavirus.

Preclinical Phase



Animal studies for toxicity and dosing.

Phase I



Small study (**20-80 people**) assessing dose needed, effect on immune system, and safety.

Phase II



Larger study (**hundreds of people**) to test safety, effect on immune system at different doses and intervals.

Large randomized study to test safety and how much vaccine protects against disease.



Phase III



Tens of thousands of people are in each trial.

Currently Available COVID-19 Vaccines



All three are highly efficacious in preventing serious illness and hospitalization.

Who can get the COVID-19 Vaccines?



Everyone 12 and older can get the vaccine.
(including those with underlying health conditions).

Only those who have had an allergic reaction to any of the vaccine ingredients or a previous dose of the vaccine should NOT get it.



What about side effects?

Common reactions:

pain, redness, and swelling at vaccination site,
and flu-like symptoms.

Moderna and Pfizer:

Rare risk of severe allergic reactions (treatable)
<5 cases /million

Johnson & Johnson:

Rare risk of blood clots
(30 cases / million among women < 50 years; 6 cases among men)

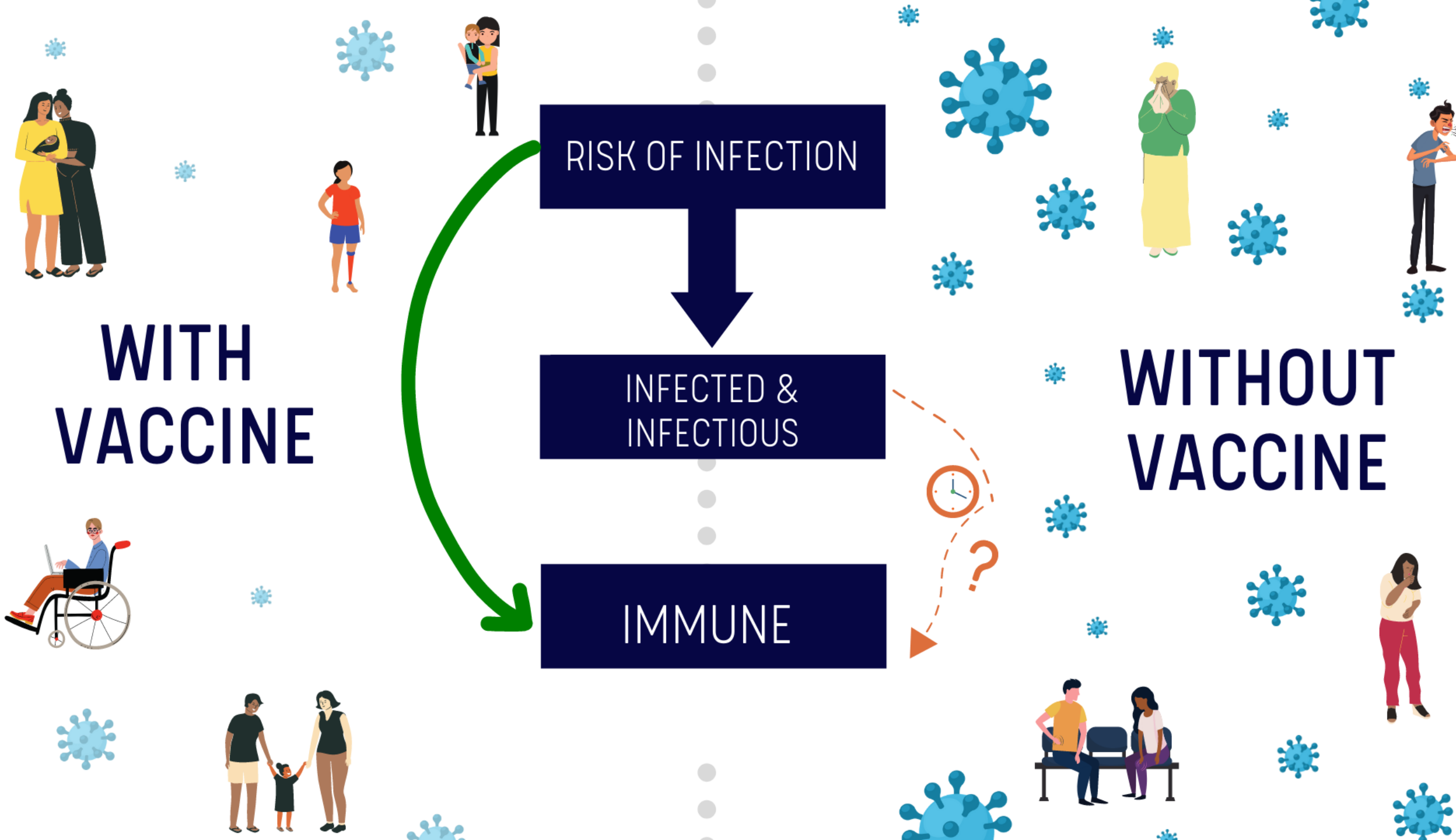
**WITH
VACCINE**

RISK OF INFECTION

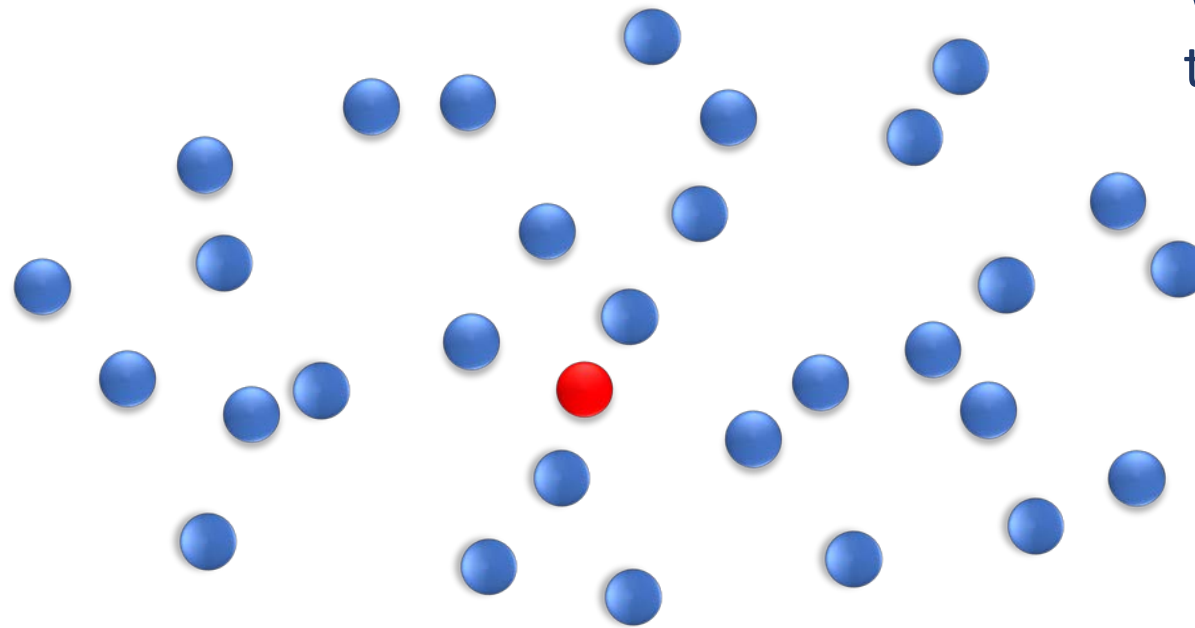
INFECTED &
INFECTIOUS

IMMUNE

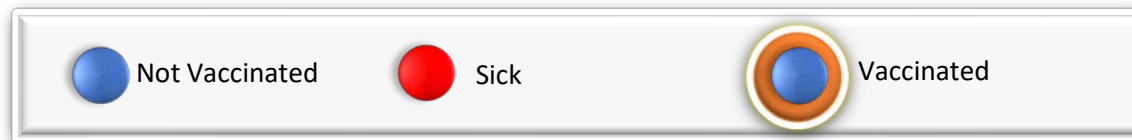
**WITHOUT
VACCINE**



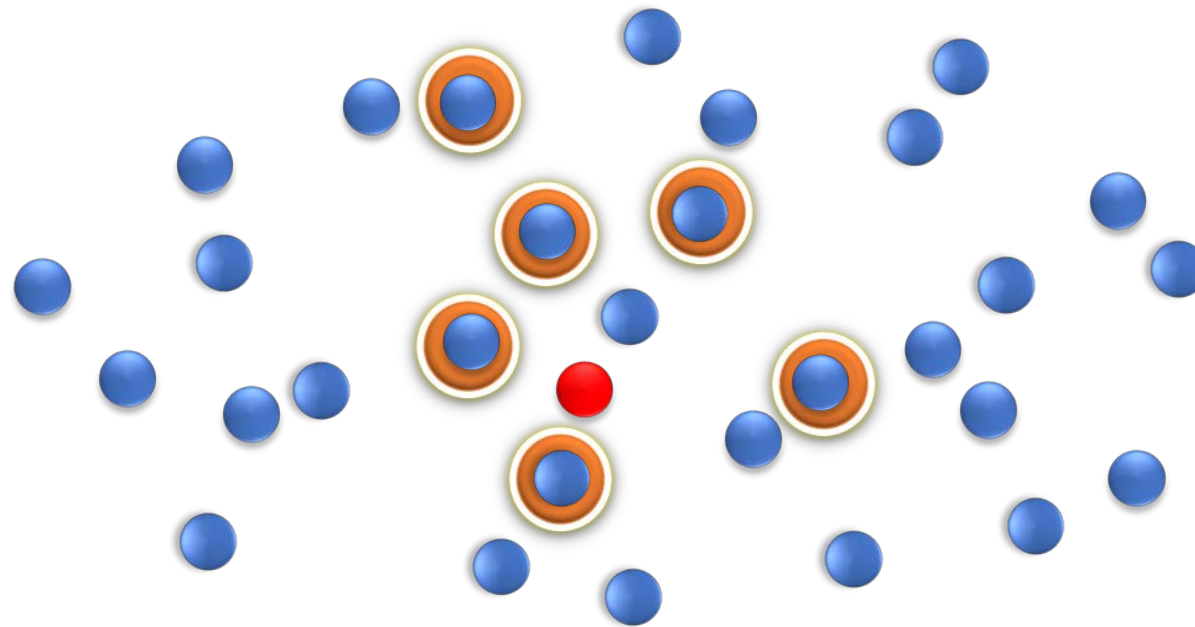
HOW WOULD MY VACCINATION PROTECT MY COMMUNITY?



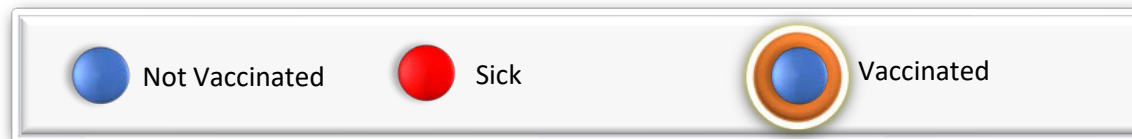
When **no one** gets vaccinated,
the disease can spread easily.



HOW WOULD MY VACCINATION PROTECT MY COMMUNITY?



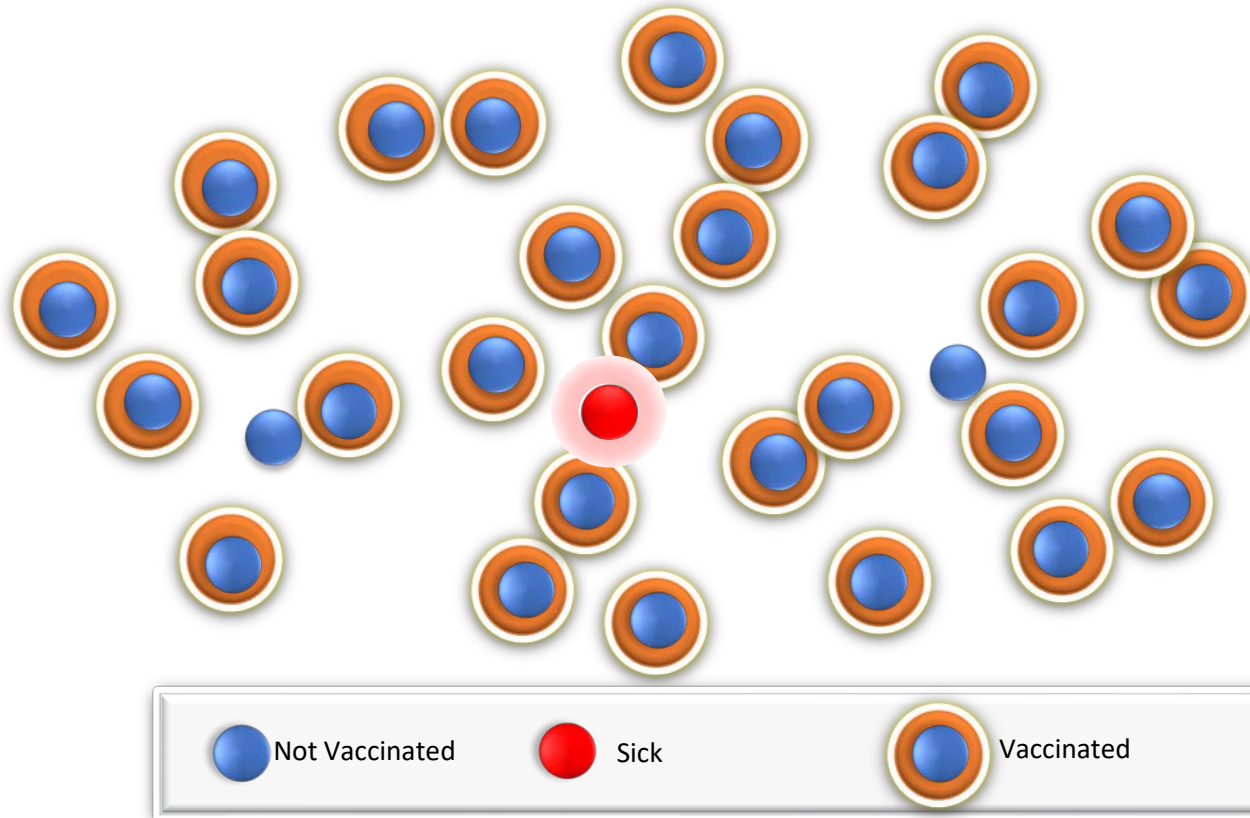
When **some people** get vaccinated, the disease spreads a little slower.



HOW WOULD MY VACCINATION PROTECT MY COMMUNITY?



Vaccines.gov



When **most people** get vaccinated, the disease can't spread.



COVID-19 VACCINE WILL:

PROTECT:

YOU
YOUR FAMILY
YOUR COMMUNITY
THE WORLD

PREVENT:

SICKNESS
LONG-TERM ILLNESS
DEATH
THE EVOLUTION OF VARIANTS

TO GET VACCINATED

For vaccine appointments at FIU, please visit:
<https://vaccines.nomihealth.com/fiu>



To find vaccination sites near you, text your zipcode to 438829 (getvax)
Or

Call: 311 or 305-614-2014 TTY Line: 888-256-8918

Homebound individuals may schedule a vaccination appointment at home by calling:
833-930-3672

<https://myvaccine.fl.gov/>

<https://miamidade.gov/global/initiatives/coronavirus/vaccine/home.page>

FOR MORE INFORMATION

[HTTPS://RCMI.FIU.EDU/COVID19FAQ/](https://rcmi.fiu.edu/covid19faq/)

[HTTPS://REPOPULATION.FIU.EDU/](https://repopulation.fiu.edu/)

[HTTPS://FLORIDAHEALTHCOVID19.GOV/VACCINES/](https://floridahealthcovid19.gov/vaccines/)



@FIURCMI



Breakout Sessions

FIU

Robert Stempel College
of Public Health
& Social Work

