

SPECIAL DELIVERY

Newsletter of FIU's Maternal and Child Health Training Program

Inside this Issue

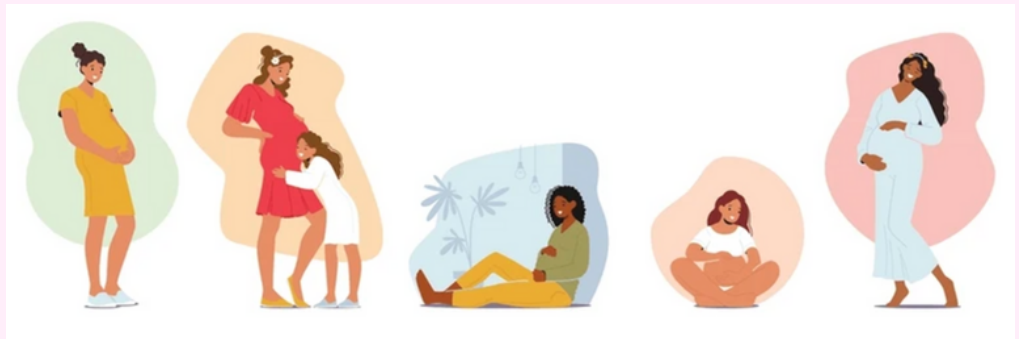
- MCH Progress
- Upcoming Events
- Educational opportunities
- It's a graduate!



We are currently accepting submissions for our next newsletter! If you'd like to contribute, please e-mail:

Dr. M. Claudia Pinzón
mpinzoni@fiu.edu

HRSA's: Four Years of Progress on MCH



Let's celebrate the new year by looking back on all the progress made in the field of maternal and child health in the last 4 years!

Mental Health Support:

- The National Maternal Mental Health Hotline provided **free, confidential support to over 50,000 mothers** and families since its launch in 2022.
- The Pediatric Mental Health Care Access program expanded to 46 states, training over 31,000 providers and benefiting 3.5 million children.

Increased Funding and Workforce Expansion:

- Home visiting program **funding doubled** to \$800 million annually, reaching **20,000 more families**.
- Over **5,800 new maternal care providers, including obstetricians and doulas, were added**, focusing on underserved areas.

Improved Care Quality:

- **Evidence-based practices were implemented in 75% of labor and delivery facilities** to address adverse pregnancy outcomes.
- Community health centers provided **prenatal care to over 2 million patients**, with expanded rural access.

Community-Based Initiatives:

- Healthy Start programs served 85,000 individuals, with **expanded doula training in high-need areas**.
- Rural programs **improved maternal care access and outcomes** in underserved regions.

Preventive and Specialized Care:

- Over **35 million children and 68 million women received preventive services without out-of-pocket costs**, including coverage for breast pumps and suicide screenings.
- Specialized services expanded for children with autism, sickle cell disease, and other complex needs, benefiting hundreds of thousands of families.

Community Engagement:

- HRSA initiatives empowered service recipients to shape policies and **expand access to maternal and child health care across diverse communities**.

UPCOMING EVENTS



Center for Women's Gender Studies 2025 Welcome Back Reception

This in-person event is a great opportunity to meet new faces, community organizations, and representatives from the Center for Student Engagement.

January 30th from 12pm to 2pm

Graham Center 243

To Register:

<https://www.eventbrite.com/e/spring-2025-cwgs-welcome-back-reception-tickets-1143060768529>

SPRING 2025 CWGS WELCOME BACK RECEPTION

Join Us As We Celebrate the Beginning of the Spring 2025 Semester



Join us on Thursday, January 30th, from 12 pm to 2 pm for the Spring 2025 CWGS Welcome Back Reception. We will share upcoming events, initiatives, projects, and more. It will be a great opportunity to build community with other faculty, staff, administrators, community organizations, and students. We will have representatives from the Centers for Student Engagement and more internal and external organizations.

Please RSVP by scanning the QR code and filling out the form or by visiting this link: <https://go.fiu.edu/Spring25WelcomeBack>



THURSDAY

JAN. 30

12 PM - 2 PM

Location

GRAHAM CENTER 243

CWGS.FIU.EDU

FIU Center for Women's and Gender Studies

THE LEARNING LAB PRESENTS

HOW TO TURN QUALITATIVE INSIGHTS INTO COMPELLING MULTIMEDIA PRESENTATIONS--QUICKLY

WITH RICH THAU

IS THIS SESSION FOR ME?

The answer is YES if:

- You're interested in qualitative research!
- You have some experience conducting focus groups or collecting qualitative data!
- You're interested in creating presentations based on your data!



The Leadership Education & Training Program in MCH Nutrition



SCHOOL OF PUBLIC HEALTH

UNIVERSITY OF MINNESOTA

CENTER FOR LEADERSHIP EDUCATION IN MATERNAL & CHILD PUBLIC HEALTH



THURSDAY, JANUARY 30, 2024 | 11:30 AM - 1:00 PM CT VIA ZOOM

RSVP: z.umn.edu/MiniLab

The **University of Minnesota** will be hosting a session on How to turn qualitative insights into compelling multimedia presentations--Quickly with

Rich Thau |

Thursday, January 30th, 2025

from 11:30am-1pm CT via Zoom.

To Register:

<https://mch.umn.edu/mini-lab/>



FIU Career and Talent Development hosts Stempel College Career Fair: Connect directly with employers hiring in Social Work, Public Health, Dietetics and Nutrition, and Disaster Management! Don't miss the Stempel College Career Fair at MMC (Modesto Maidique Campus), CBC 232.

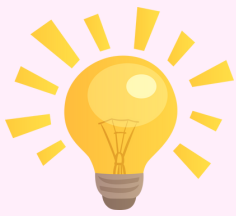
February 13th 4th-7pm

Please bring copies of your resume
Dress in professional business attire

Bring your FIU Panther ID

To Register:

https://app.joinhandshake.com/stu/career_fairs/55459



EDUCATIONAL OPPORTUNITIES

FIU Center for Children and Families hosts:

2025 Miami International Child & Adolescent Mental Health (MICAMH) Conference presents evidence-based prevention and treatment interventions for mental health and educational problems in children and adolescents.

February 5th-7th, 2025 at FIU Biscayne Campus.

To Register:

<https://micamh.fiu.edu/>



FREE Certification Workshop - Youth Mental Health First Aid



If you interact with youth and care to see them live safe and healthy lives, we have a **FREE** training for you! Hope for Miami's Project Bridge offers Youth Mental Health First Aid (YMHA) to any adult who interacts with teens (or parents of adolescents). YMHA is a 6.5-hour course that can increase mental health awareness through education on behavioral health and addictions and can help you recognize the potential early warning signs.

Session 1
FIU- 11200 SW 8th St, Miami, FL 33199
ACH 5 (room 201)
Monday, February 3rd, 2025
3 - 6 pm

Session 2
FIU- 11200 SW 8th St, Miami, FL 33199
ACH 5 (room 201)
Monday, February 10th, 2025
3 - 6 pm

You must attend **BOTH** sessions to receive the YMHA Certification.

Open to all students;
funded by SGA



Scan the QR code to register, or contact
Hayly Ojeda at
hayly@hopeformiami.org or 786.388.3000.
Join our Instagram community- @ProjectBridgeHFH



School of Social Work and Phi Alpha Honor Society is collaborating with Project Bridge for a Youth Mental First Aid (YMHA) training.

This is a two-day training for any health professional interested in working with teens. This is a 2-day training (6.5 total hours course) focused on mental health awareness and identifying early warning signs.

Training Days: February 3rd and February 10th, 2025

AHC 5 (Room 201)

3-6 pm

Register:

https://docs.google.com/forms/d/e/1FAIpQLSfIAi9duxy_z5jpDKemygYy6yzygy2B61BEZPCshwvsXaFIyug/viewform

m

The 2025 Maternal Mental Health (MMH) FORUM:

Together with Policymakers, Payors, Provider Leaders, and our Partners, we will discuss progress, roadblocks, and solutions to closing gaps in maternal mental health care.

March 18th-March 19th, 2025

Virtual Session

To Register:

<https://policycentermmh.org/forum/>

2025

Maternal Mental Health FORUM

at the Intersection of Policy, Payment and Practice

Tuesday-Wednesday
March 18-19, 2025

Register Now



It's a graduate!



Congratulations are for Kayla Pryce who graduated from the MCH MPH Concentration last Fall 2024! We wish you a productive career in Maternal and Child Health.

✨ Leaders in Maternal & Child Health are looking for new members! Interested in becoming a member or joining our E-board? Reach out to Debra Dhaity at ddhai002@fiu.edu.

📱 Stay connected and don't miss out on upcoming events for this semester— Follow us on Instagram [@fiu_lmch](https://www.instagram.com/fiu_lmch) or Panthers Connect.

