

# Master of Public Health (MPH) with a Major in Global Health: **an overview**

---

Rajiv Chowdhury  
MBBS, MPhil, PhD (Cambridge)  
Chair and Professor  
Department of Global Health  
Stempel College of Public Health and Social Work

*On behalf of the Global Health Curriculum Committee  
Stempel College of Public Health and Social Work*



**FIU**



# 1. Background: Global Health and Stempel Department of Global Health

---

# Global Health: why is it important?

A framework for joint thinking and action, characterized by:

- improving health **across countries and societies**
- considering health as an **intrinsic social goal**
- reduction of **health inequities**
- protecting against **problems that transcend national borders**
- taking a **multidisciplinary, holistic approach**



BMJ Global Health, 2018

# Department of Global Health

---

## Vision

- ▶ To enable global health equity, through fostering **interdisciplinary population science** and **education**

## Missions

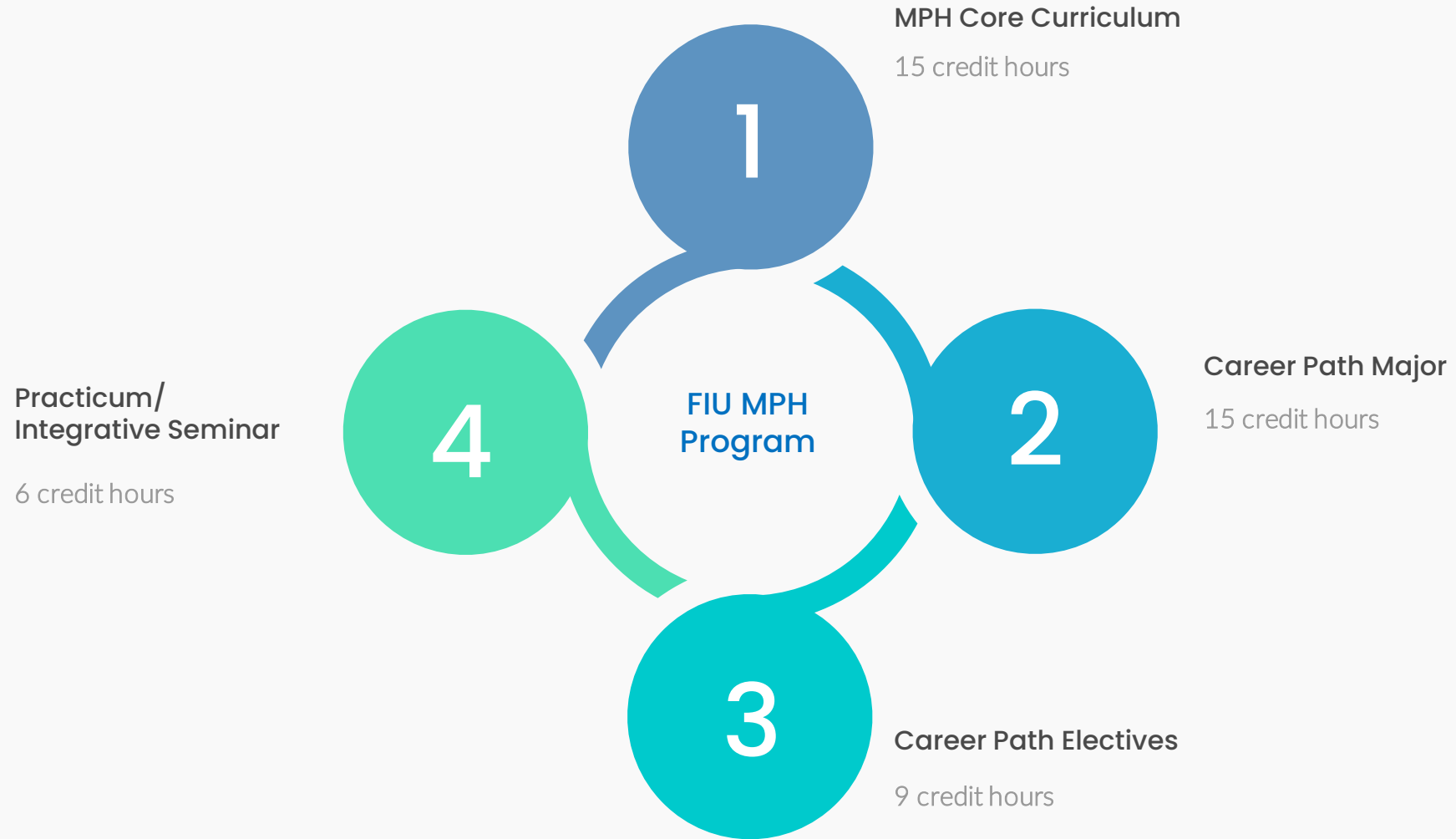
1. Integrate transnational networks as vehicles for world-class research and education (**“global integration”**)
2. Mobilize local expertise to innovate global lifesaving solutions (**“knowledge mobilization”**)
3. Harvest global knowledge for local translation (**“glocalization”**)



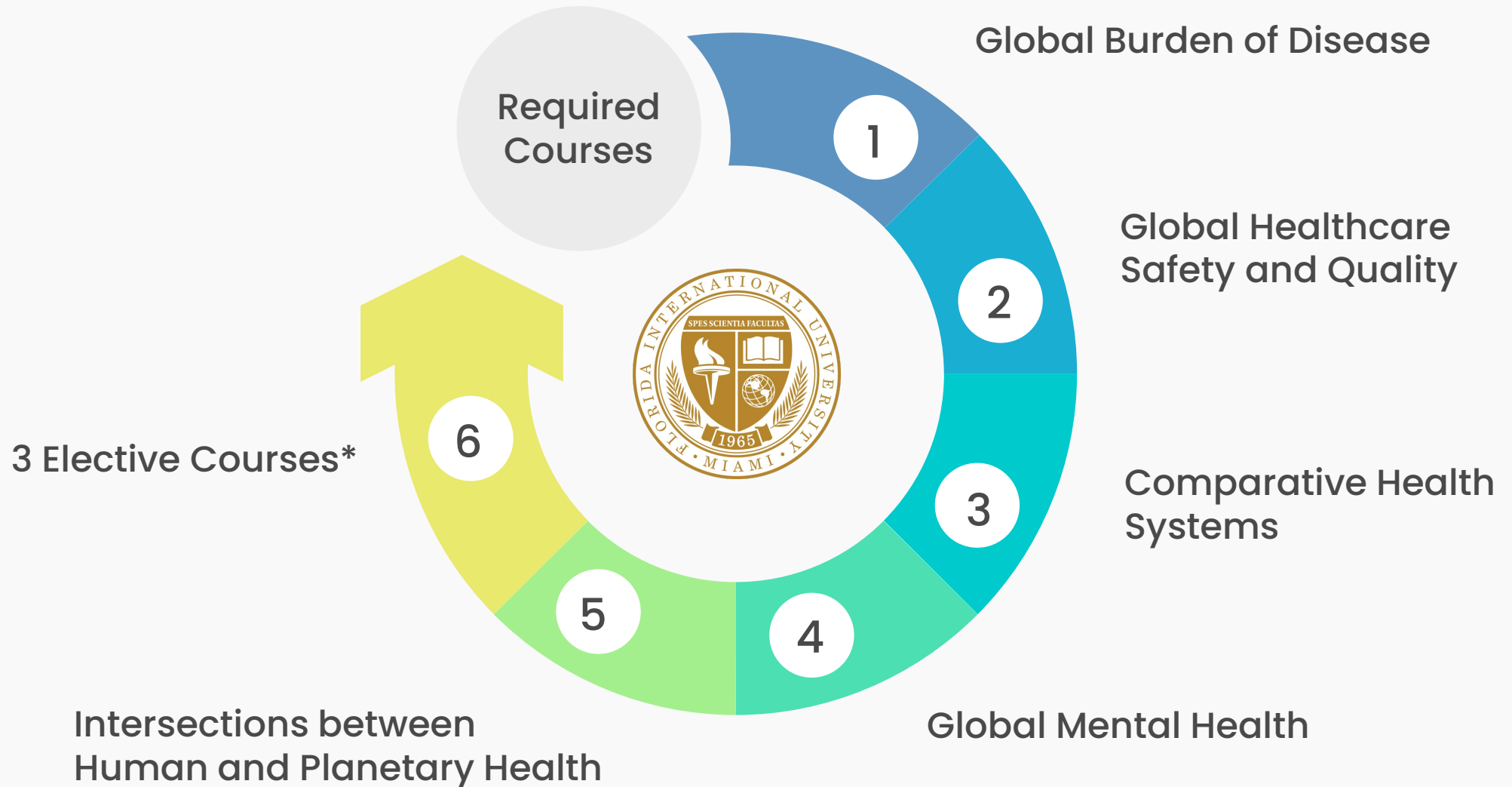
## 2. Overview of the new program

---

# FIU Regular MPH Program: at a glance

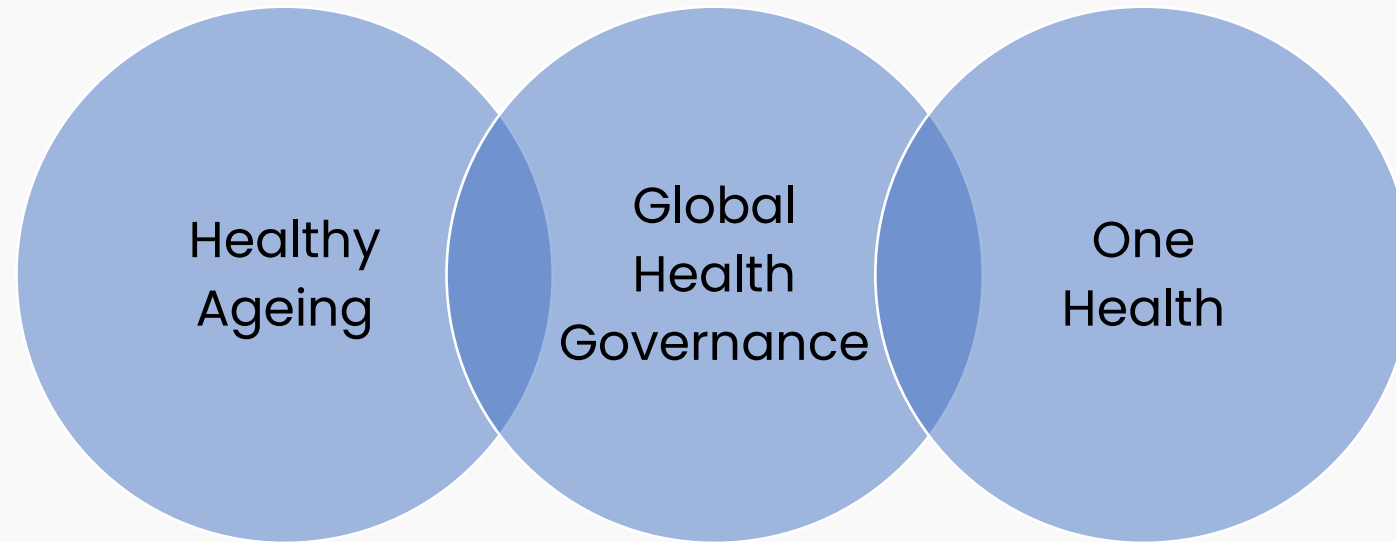


# MPH in Global Health: **career path required courses**



## MPH in Global Health: **Elective Courses\***

---



**\*Students may also choose elective courses from other public health career paths**



# Global Health competencies

---

- ▶ Assess the health and well-being of global communities and populations emphasizing the impact of transnational determinants ([Global Burden of Disease](#))
- ▶ Articulate the significance of global health diplomacy with respect to its role(s) with international agencies, governmental organizations, and the development agenda ([Comparative Health Systems](#))
- ▶ Characterize holistic, integrative, and transdisciplinary approaches toward contemporary health issues, international health systems, and diverse development and governing models ([Global Healthcare Quality and Safety](#))
- ▶ Propose advocacy strategies for global health initiatives that integrate compassion and ethics with efficiency and effectiveness ([Global Mental Health](#))
- ▶ Compare and contrast the effectiveness of collaborative efforts and communications across global and local settings in the contexts of networks of power, systemic marginalization, and structural inequalities ([Intersections Between Human and Planetary Health](#))

# Lead instructors



Rajiv Chowdhury, FIU



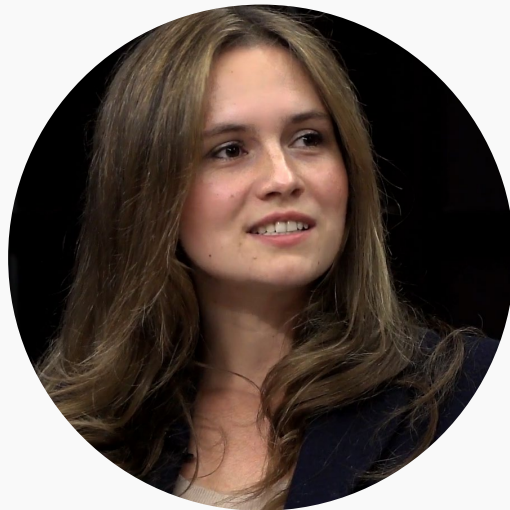
Alejandro Arrieta, FIU



Gilbert Ramirez, FIU



Alok Deoraj, FIU



Olivia Remes, Cambridge/  
Natalia Trujillo (Antioquia)



Douglas Bettcher, WHO/Oxford



Oscar Franco, Utrecht/Harvard

## MPH in Global Health: **who should take this course?**

---

- ▶ Healthcare professionals at any stage of career
- ▶ Public health practitioners or researchers
- ▶ Epidemiologists
- ▶ Health services or health industry professionals
- ▶ Nonprofit administrators
- ▶ Policy analysts
- ▶ Social science graduates
- ▶ Social entrepreneurs
- ▶ Professionals based in government or private industries who are interested in health inequity issues or health diplomacy

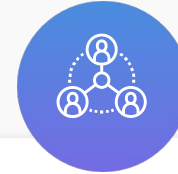
# MPH in Global Health: **student career opportunities**



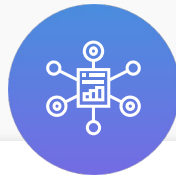
Academic career route



US and other national public health offices



Global Health Foundations (US and abroad)



International Health agencies and charities



Industry (health and pharmaceuticals)