

SPECIAL DELIVERY

Newsletter of FIU's Maternal and Child Health Training Program

Save the Date

Inside this Issue

- Save the Date
- Article Highlight
- Training Opportunities
- LMCH Updates



We are currently accepting submissions for our next newsletter! If you'd like to contribute, please e-mail:

Dr. M. Claudia Pinzón
mpinzoni@fiu.edu



National Women and Girls HIV/AIDS Awareness Day

Date: 3/10/2024

This year marks the 19th annual observance of National Women and Girls HIV/AIDS Awareness Day.

“Prevention and Testing at Every Age. Care and Treatment at Every Stage.”



Out of the Darkness Suicide Prevention Walk

Walk Date: 03/16/2024

Walk Location: FIU Graham Center - Pit, Miami, FL

Onsite Registration Time: 9:30 am

Walk Program Starts: 10:30 am

“Together we can bring mental health conditions like depression and anxiety out of the darkness and put a stop to this loss of life.”

[Click Here to Register or Volunteer](#)



National Public Health Week

Date: April 1st-7th, 2024

National Public Health Week is a time to recognize the contributions of public health and highlight issues that are important to improving our nation's health.



Black Maternal Health Week

Date: April 11-17th, 2024

Black women have the highest maternal mortality rate in the United States. This is to raise awareness of maternal mental health issues affecting Black women during pregnancy, childbirth, and after.

Article Highlight: 2022-2026 Florida State Health Improvement Plan



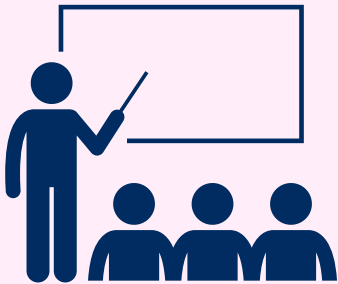
[Click here to read the complete plan](#)

The [2022-2026 Florida State Health Improvement Plan \(SHIP\)](#) is a 5-year roadmap to improve the public health system and health outcomes in the state of Florida. The plan identifies goals for seven guiding priority areas: Alzheimer’s Disease and Related Dementias, Chronic Diseases and Conditions, Injury, Safety and Violence, Maternal and Child Health, Mental Well-being and Substance Abuse Prevention, Social and Economic Conditions Impacting Health and Transmissible and Emerging Diseases.

The roadmap identifies 4 main goals for Maternal and Child Health:

- (1) Increase access to quality primary, preventative and sub-specialty care for infants, children, and adolescents
- (2) Reduce infant morbidity and mortality
- (3) Reduce maternal morbidity and mortality
- (4) Improve preconception and interconception health.

Training Opportunities



**Maternal Health and the Effects of Inequity:
From the Individual to the Global Perspective**

Featured Speaker:



Ronnie Lichtman, CNM, LM, PhD, FACNM

Professor and Chairperson

*Midwifery Education Program, The State University of New York (SUNY)
Downstate Health Sciences University*

Co-Director

*Midwifery Component, Kellogg Foundation-funded Project,
Sustainable Villages and Living Communities*

**Tuesday, March 26, 2024
6:00PM - 7:00PM ET**

Click below to register for the live webinar!

REGISTER NOW!

This webinar is pending approval for 1.0 Prescribed CME/CNE credits by



[Click Here for Training Registration](#)

LMCH Updates

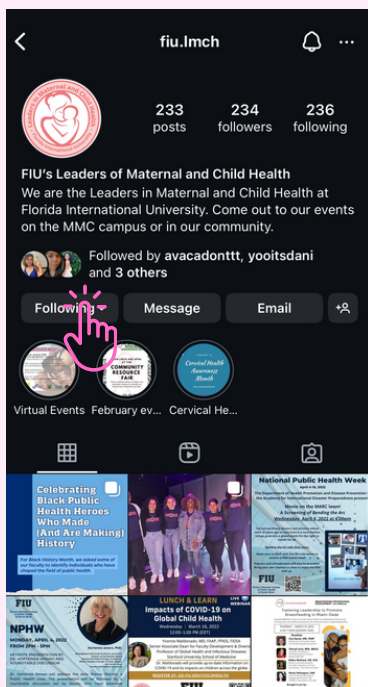


Stempel College Social Work and Public Health Students & Faculty



LMCH Members with Dr. Dorothy Bendross-Midingall, School Board Member and event host, and Professor Greer

FIU Leaders in Maternal & Child Health volunteered at **No More Broken Hearts: Domestic Violence Workshop and Resource Fair on Saturday, February 24, 2024** at Miami-Dade College's North Campus. We had over **40 visitors** and **distributed 50 teddy bears** for the Comfort Room that was decorated and staffed by students and faculty. In addition, participants visited the Resource Fair, where social work students and volunteers provided community resources! Thank you, to Professor Greer for leading the volunteer groups for this event and to and Dr. Dorothy Bendross-Midingall for organizing and inviting LMCH to the event.



FIU Leaders in Maternal and Child Health are committed to maternal and child health education and awareness through activities including volunteering, service learning, and events on campus and within the communities of South Florida and beyond. We are back active on campus! Follow us to stay connected!



- Instagram: [@fiu.lmch](https://www.instagram.com/fiu.lmch)
- [PanthersConnect](#)
- [Whatsapp Group chat](#)
- Email: lmch@fiu.edu