



Robert Stempel College of Public Health & Social Work

# Social Work Spring 2026 Orientation



10:15 AM – 10:30 AM | **Welcome & School of Social Work Overview**

Dr. Mary Helen Hayden, Director

10:30 AM – 10:45 AM | **Becoming Part of an Ethical Community**

Prof. Jennifer Abeloff, Associate Director

10:45 AM – 10:50 AM | **Honor Pledge**

Prof. Jennifer Abeloff

### **Program Breakout Sessions**

10:50 AM – 1:00 PM | **Bachelor (BSSW) – OVERVIEW OF BSSW Program**

Prof. Jennifer Abeloff, Associate Director

Ms. Sheila Jenkins-Boone, Academic Advisor III

Prof. Doyline Kreegel, Assistant Coordinator of Field Education(BSSW)

10:50 AM – 1:00 PM | **Master (MSW) – OVERVIEW OF MSW PROGRAM**

Ms. Alyssa Ezequiel, Senior Coordinator Academic Support Services, MSW/PhD Graduate Advisor

Prof. Nicole Neufeld, Coordinator of Field Education (MSW)

## *School of Social Work Overview*



**FIU**

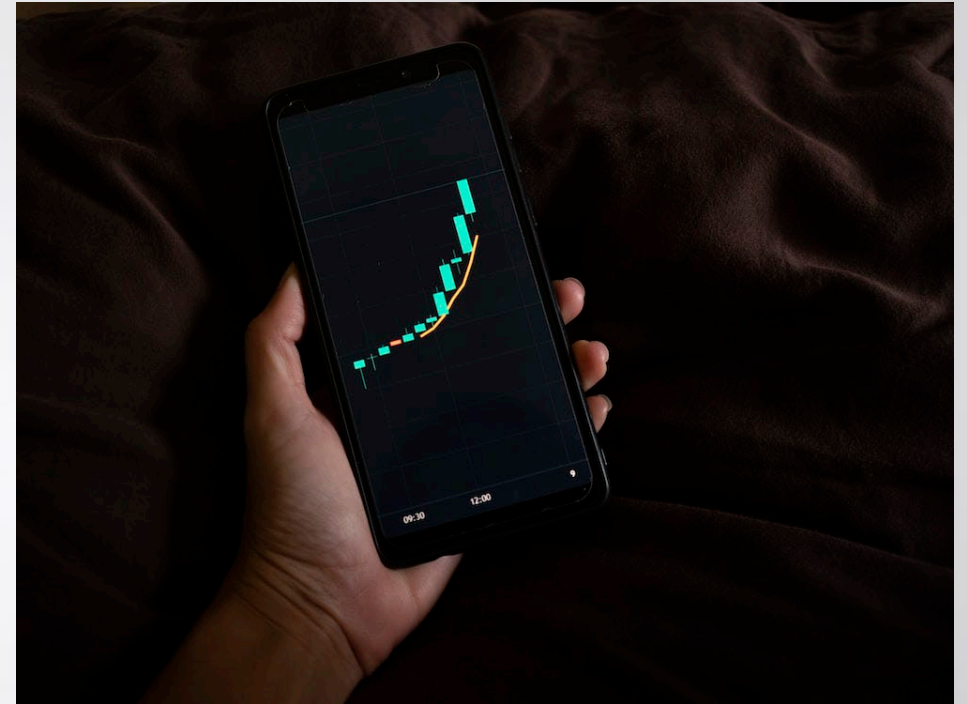


## School of Social Work Mission Statement

The School of Social Work empowers future social workers and prepares them to work with individuals, families, groups, organizations, and communities to eliminate social and economic inequities and reach their full potential. The school generates partnerships and collaborates with social work professionals. The goal is to facilitate the advancement of social work leaders within diverse and multicultural communities. We are committed to innovative research, teaching, and service that promotes inclusive and culturally responsive solutions to advance social justice.

# Social Work Career Prospects

- ✓ Employment of social workers is projected to grow 6 percent from 2024 to 2034. Faster than the average for all occupations.
- ✓ According to the Substance Abuse and Mental Health Services Administration (SAMHSA), professional social workers are the nation's largest group of mental health services providers.
- ✓ South Florida community has growing necessity in social services.
- ✓ High rates of job obtainment in BSSW, MSW, and PhD programs.



(Bureau of Labor Statistics, U.S. Department of Labor, Occupational Outlook Handbook, Social Workers, at <https://www.bls.gov/ooh/community-and-social-service/social-workers.htm>, Retrieved December 8<sup>th</sup>, 2025.)

(About Social Workers <https://www.socialworkers.org/News/Facts/Social-Workers#:~:text=According%20to%20the%20Substance%20Abuse,of%20mental%20health%20services%20providers.>, Retrieved November 28<sup>th</sup>, 2023.)



# Program Recognitions



- Graduate Program Ranked Top 100  
Among All Social Program Programs (2024 *US News & World Report*)
- Program continuously exceeds State Metrics for Retention, Graduation, Employment & Continuing Education

# Programs

- ✓ Bachelor of Science in Social Work (BSSW)
- ✓ Master's of Social Work (MSW)
- ✓ Ph.D. in Social Welfare



## *Focuses:*

- Cultural Humility
- Intersectionality
- Anti-Racist/Anti-Oppressive Practices
- Health Disparities
- Trauma-Informed Practice
- Social Justice/Advocacy
- Evidence-Informed Practices

# Our Faculty

## 21 Full-Time Faculty Members

- Scholarships (2023-2024)  
Publications: 60+  
Presentations: 70+
- External Funding (2023-2024)  
\$ 14,000,000 +
- Community Engagement  
Faculty on Boards of 10 different organizations & community-engaged research





# Research & Training

- Center for Research on U. S. Latino HIV/AIDS and Drug Abuse (CRUSADA)  
*Directed by Dr. Mario De La Rosa*
- Community-Based Research Institute (CBRI)  
*Directed by Dr. Eric Wagner*



# School of Social Work Program Accreditation

- ✓ BSSW & MSW Accredited by the Council on Social Work Education (CSWE)
- ✓ 2024 – Unconditional Reaffirmation for both programs



# Curriculum

## BSSW Generalist Practice

- 9 Generalist Core Competencies
- 20 Generalist Behaviors

- Courses in Human Behavior & the Social Environment, Policy, Research, Practice and Field
- Foundation in Public Health

## MSW Specialized Advanced Clinical Practice

- 9 Core Competencies
- 1<sup>st</sup> year – 20 Generalist Behaviors
- 2<sup>nd</sup> year – 29 Specialized/Advanced Clinical Practice Behaviors

PhD – Focus on Research, University Teaching & Leadership in Social Work & Social Welfare

# Certificate Programs

- Child Welfare Certificate (BSSW)
- Graduate Certificate in Addictions (MSW)
- Graduate Certificate in Child Welfare (MSW)
- Graduate Certificate in Disaster Behavioral Health (MSW)—coming fall 2026





# Combined Degrees

## I. MSW/JD

*Masters in Social Work/Juris Doctor*

## II. MSW/MPH

*Masters in Social Work/Masters in Public Health*



# Field Education

- Field Practicum (2024-2025)

- ✓ Total: 249 placements - 74,064 clock hours
- ✓ Affiliations with over 100 agencies serving Dade, Broward, Monroe, & Palm Beach Counties
- ✓ Over 275 qualified Field Instructors

- Behavioral Health Workforce Education and Training (BHWET) Fellowship
- NeighborhoodHELP™

# Our Students

2024 - 2025

- *BSSW* - 139
- *MSW* – 181
- *Ph.D.* - 19



# Student Engagement

- Student Social Work Association & Phi Alpha Honor Society
  - ✓ *LEAD Day in Tallahassee*
  - ✓ *SoBe Food Rescue*
  - ✓ *Sock Collection for Unhoused*
  - ✓ *Student Food Pantry Collection*
  - ✓ *Professional Panel*
  - ✓ *Signature Events*
- Phi Alpha Honor Society - National Service Award 14 Consecutive Years





# Student Engagement Continued

## *Peer Groups for Social Work Students*

- Social Work Student Community Group (vgray@fiu.edu)
- Black Social Work Student Voices Group (couwilso@fiu.edu)
- Friends of Dorothy LGBTQIA+ Student Group (abeloffj@fiu.edu)
- Herman@s (vgray@fiu.edu)
- Smile It's Sunnah Muslim Student Group (ngiordan@fiu.edu)
- Caribbean Student Peer Group (btuttle@fiu.edu)
- Jewish Peer Student Group (nneufeld@fiu.edu)

Opportunities for student involvement always encouraged!



# Assessment of Outcomes

- Strong Outcome Measures for BSSW and MSW Programs (Final Field Evaluations, Exit Surveys, Portfolio/Capstone)
- Our Measures Serve as Model for other University Programs
- Outcome Data Provides Data for Decisions on Programs/Curriculum



# Final Thoughts

“Ignoring your passion is like dying a slow death...Passion whispers to you through your feelings, beckoning you toward your highest good. Pay attention to what makes you feel energized, connected, stimulated-what gives you your juice. Do what you love, give it back in the form of service, and you will do more than succeed. You will triumph.”

*Oprah Winfrey*





# Ethical Community

Presented by Jennifer Abeloff, Associate Director



# What is an Ethical Community?

Students and faculty ***intentionally*** commit to upholding FIU's Student Conduct and Honor Code, School of Social Work's policies and procedures, the National Association of Social Work (NASW) Code of Ethics and the Council on Social Work Education (CSWE) Core Competencies.

## Main Virtues

- *Integrity (adherence to code)*
- *Respect (special regard)*
- *Honesty (adherence to truth)*

# Why Ethical Communities Matter

- Our **behavior** in one area can impact behavior other areas.
- We have opportunity to **lead** by example.
- We can feel **empowered** to implement positive change.
- **Advocate** for what is right.



# FIU's Culture of Academic Integrity

*FIU is committed to the CORE values: Responsibility, Truth, Freedom, Respect and Excellence.*

- *It is the **Responsibility** of all students, faculty and administration to conduct all academic and scholarly activities in **Truth** which means the honest pursuit, generation, dissemination and application of knowledge.*
- ***Freedom** of thought and expression allows us to show concern and act on issues related to Academic Integrity with **Respect** for the diversity and dignity of all individuals.*
- *Together these core values form the foundation for Academic Integrity at FIU which brings **Excellence** in intellectual, personal and operational endeavors.*



Retrieved from <http://integrity.fiu.edu/>

# FIU's Standards of Student Conduct

*“Undergraduate, Graduate, and Professional Students at FIU are expected to adhere to the highest standards of integrity in every aspect of their lives. Honesty in academic matters is part of this obligation. Academic integrity is the adherence to those special values regarding life and work in an academic community.”*

*(Retrieved from <https://studentaffairs.fiu.edu/get-support/student-conduct-and-conflict-resolution/student-conduct-and-honor-code/index.php>)*



# Social Work as an Ethical Profession

The primary mission of the social work profession is to enhance human well-being and help meet the basic human needs of all people, with particular attention to the needs and empowerment of people who are vulnerable, oppressed, and living in poverty.

- Social work is a professional and academic discipline committed to the pursuit of social welfare, social change and social justice.
- The field works towards research and practice to improve the quality of life and to the development of the potential of each individual, group and community of a society.

## NASW's Code of Ethics: Social Work Core Values (6)

1. **Service** (*help those in need and address social problems*)
2. **Social justice** (*challenge social injustice*)
3. **Dignity and worth of the person** (*respect inherent worth and dignity of a person*)
4. **Importance of human relationships** (*recognize central importance of relationships*)
5. **Integrity** (*behave in trustworthy manner*)
6. **Competence** (*practice in areas of competence and enhance expertise*)

# School of Social Work AI Use Policy

- AI-generated submissions are not permitted and will be treated as plagiarism for all assignments unless a course syllabus indicates that an assignment intentionally and purposively uses AI.



You should **not** use any separate, built-in, or plug-in tool or feature that generates text (for example, Wordtune, Google Docs "Help me write," GrammarlyGO generative text, ChatGPT, Claude, Bing, Bard) during the idea-generation or drafting stage of the writing process except for an assignment specified in a course syllabus as allowing the utilization of AI. .



If allowed in a course, failure to attribute AI-generated content appropriately will be considered plagiarism and may result in a report to Student Conduct and Academic Integrity.



Use grammar check and spellcheck options on your word-processing software or Grammarly grammar check (but not GrammarlyGO's generative text option)

# School of Social Work Attendance Policy

- Students are permitted up to three unexcused absences per course. Upon the fourth unexcused absence, the student will automatically fail the course, regardless of performance in other areas.
- Please note: Class participation is evaluated separately and is not included in this attendance policy.



# Ethical Community: *Becoming a Member*

## Choose and Commit:

- ✓FIU's Student Conduct and Honor Code
- ✓School of Social Work Policies and Procedures
- ✓NASW's Code of Ethics
- ✓CSWE's Competencies





*Welcome and Congratulations!*



# References

- CSWE Core Competencies. Retrieved from <http://www.cswe.org>
- Florida International University, Academic Integrity: A Culture of Academic Integrity at FIU. <http://integrity.fiu.edu/>
- *Florida International University, Student Conduct and Honor Code*. <https://studentaffairs.fiu.edu/get-support/student-conduct-and-conflict-resolution/student-conduct-and-honor-code/index.php>
- McCabe, D., Butterfield, K., & Trevino, L. 2012. *Cheating In College: Why Students Do It and What Educators Can Do About It*. Maryland. John Hopkins University Press.
- NASW Code of Ethics. Retrieved from <https://www.socialworkers.org/about/ethics/code-of-ethics>
- School of Social Work, Masters Program Handbook. Retrieved from <https://stempel.fiu.edu/wp-content/uploads/sites/75/2019/03/MSW-Program-Handbook-01.2019.pdf>
- School of Social Work Undergraduate Student Handbook. Retrieved from [https://stempel.fiu.edu/wp-content/uploads/sites/75/2018/01/School-of-Social-Work\\_BSSW-Handbook-2018.pdf](https://stempel.fiu.edu/wp-content/uploads/sites/75/2018/01/School-of-Social-Work_BSSW-Handbook-2018.pdf)

# Honor Pledge

---



## **I understand that as a social work student in FIU's School of Social Work, I am a member of an ethical community. Therefore, I pledge:**

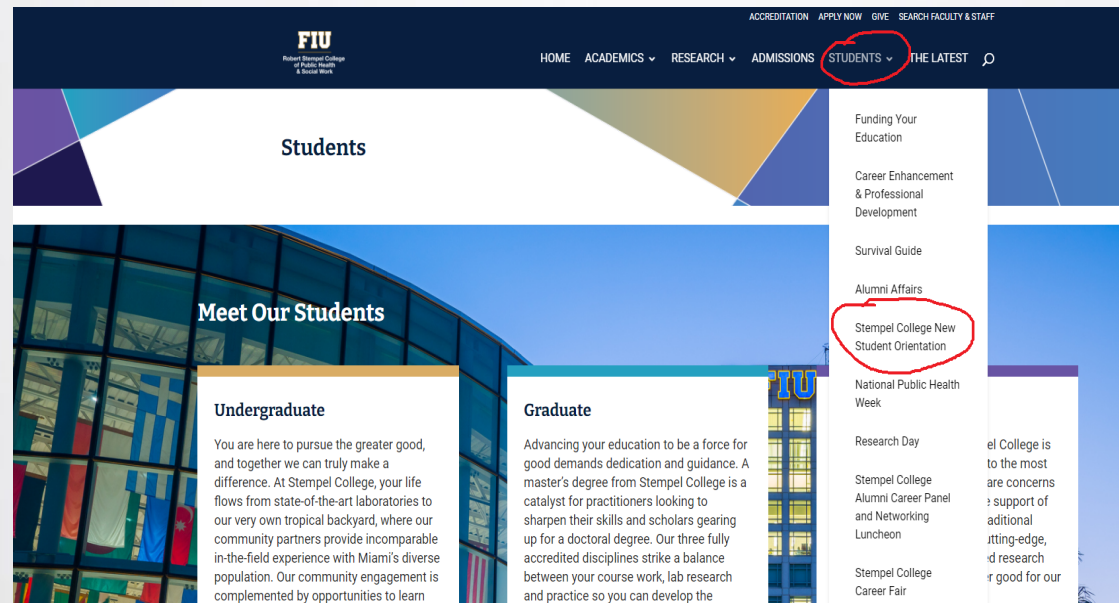
1. To adhere to the mission of the social work profession that is rooted in a set of core values including:
  - a. Service to others,
  - b. Promotion of social, economic, racial, and environmental justice,
  - c. Respect for the dignity and worth of all persons,
  - d. Recognition of the central importance of human relationships,
  - e. Behavior reflecting trustworthiness, and
  - f. Development and enhancement of professional competence and expertise.
2. To adhere to the National Association of Social Workers [Code of Ethics](#) and *Standards and Indicators for Cultural Competence in Social Work Practice*.
3. To be actively involved in professional social work development through assessment of my academic and personal aptitude and performance.
4. To learn and demonstrate the skills, abilities, and knowledge of the nine competencies set forth by the [Council on Social Work Education \(CSWE EPAS, 2022\)](#) in classes and fieldwork
5. To be inclusive and respectful of individual diversity, including differences and intersectional ties of “age, caste, class, color, culture, disability and ability, ethnicity, gender, gender identity and expression, generational status, immigration status, legal status, marital status, political ideology, race, nationality, religion and spirituality, sex, sexual orientation, and tribal sovereign status” (CSWE, 2022).
6. To adhere to the [FIU Student Conduct and Honor Code](#).





Your orientation documents can be found here:

<https://stempel.fiu.edu/stempel-college-new-student-orientation/>





# Program Breakout Sessions

**Bachelors**  
**(BSSW)**

<https://fiu.zoom.us/j/89093142720>

**Masters**  
**(MSW)**

<https://fiu.zoom.us/j/8754162680>

7